

# Latest Techniques for Jawline Contouring

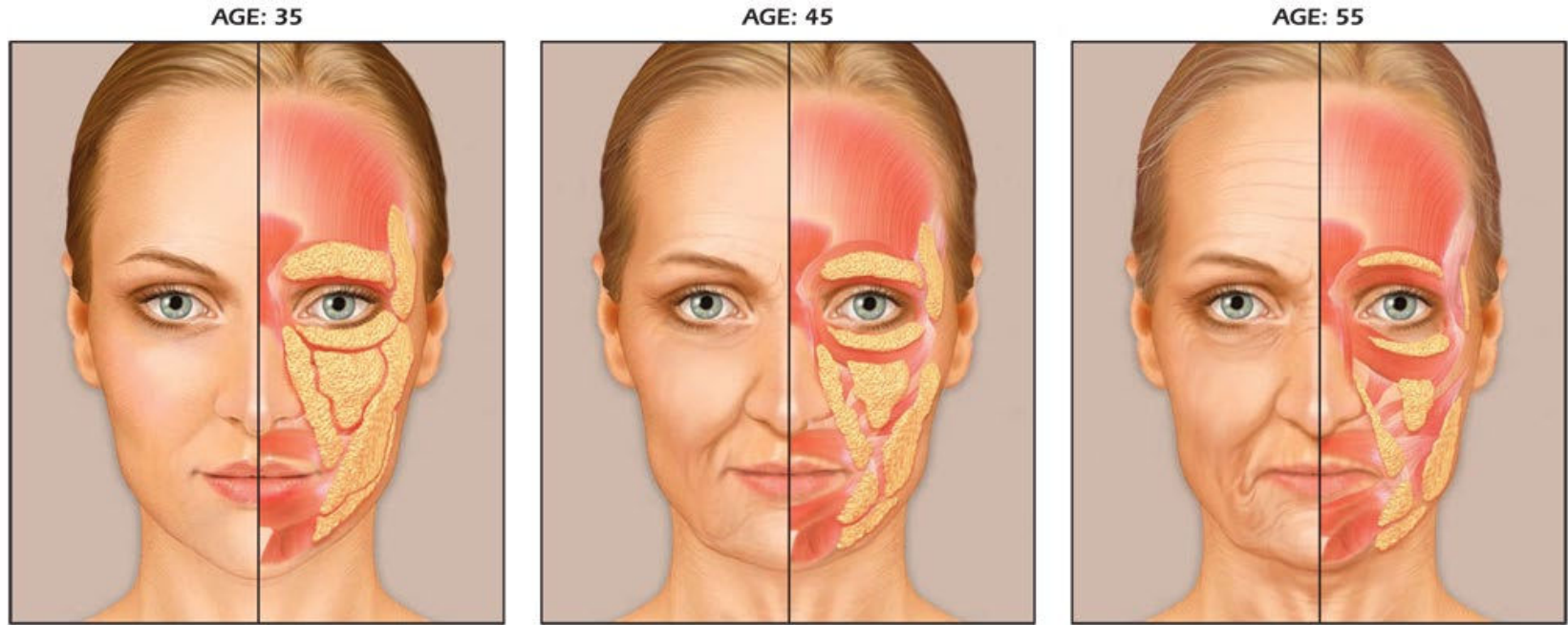
Dr. Doris Day  
Clinical Associate Professor of Dermatology  
NYU Langone Health  
New York, NY



# The Problem of Lower Face Aging

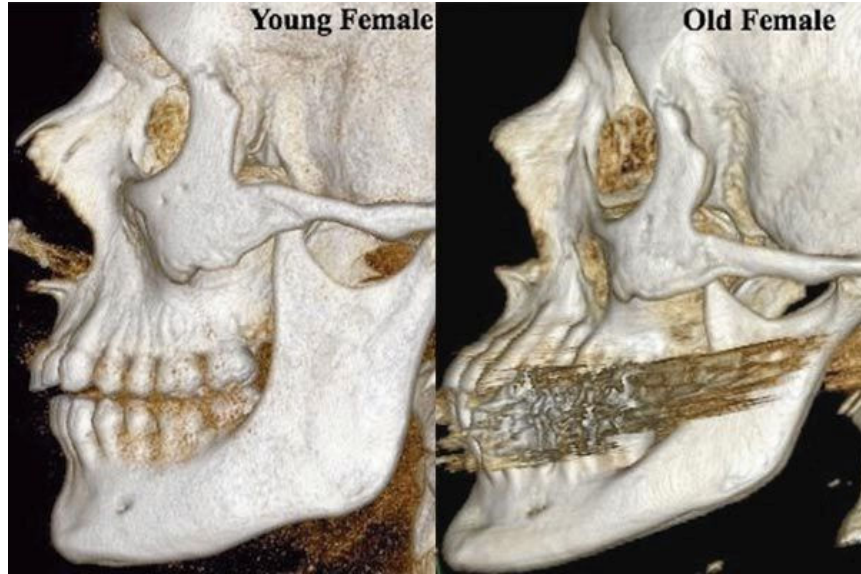


# Timeline of Facial Aging



(Grosse Pointe Dermatology, <https://grossepointedermatology.com/conditions-treatment/anatomy-of-facial-aging-2/>)

# Bone Structure Changes As We Age

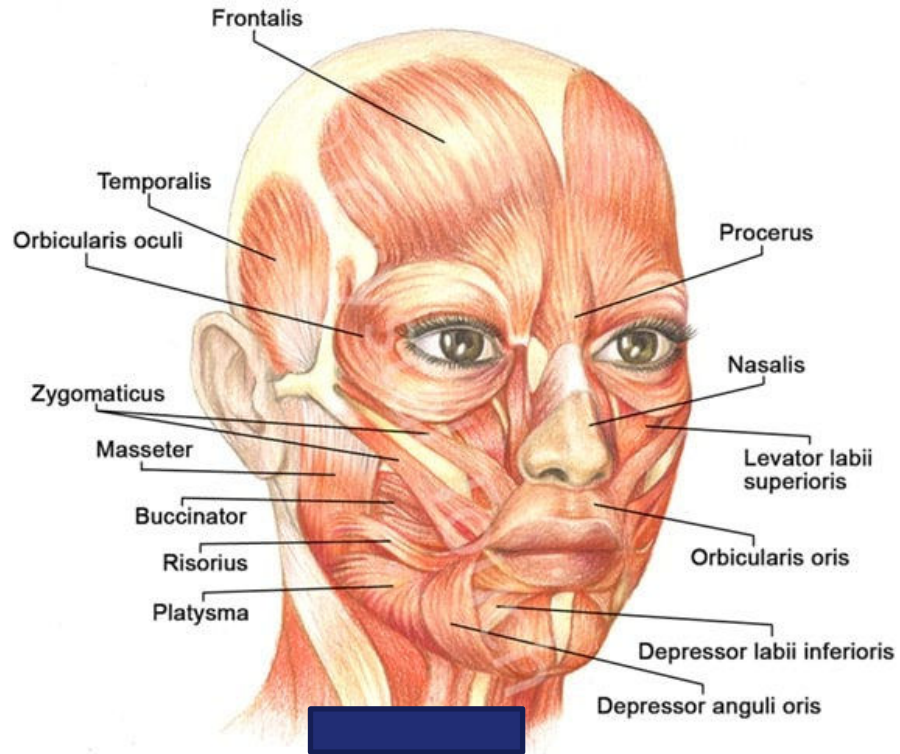


(University of Rochester Medical Center)

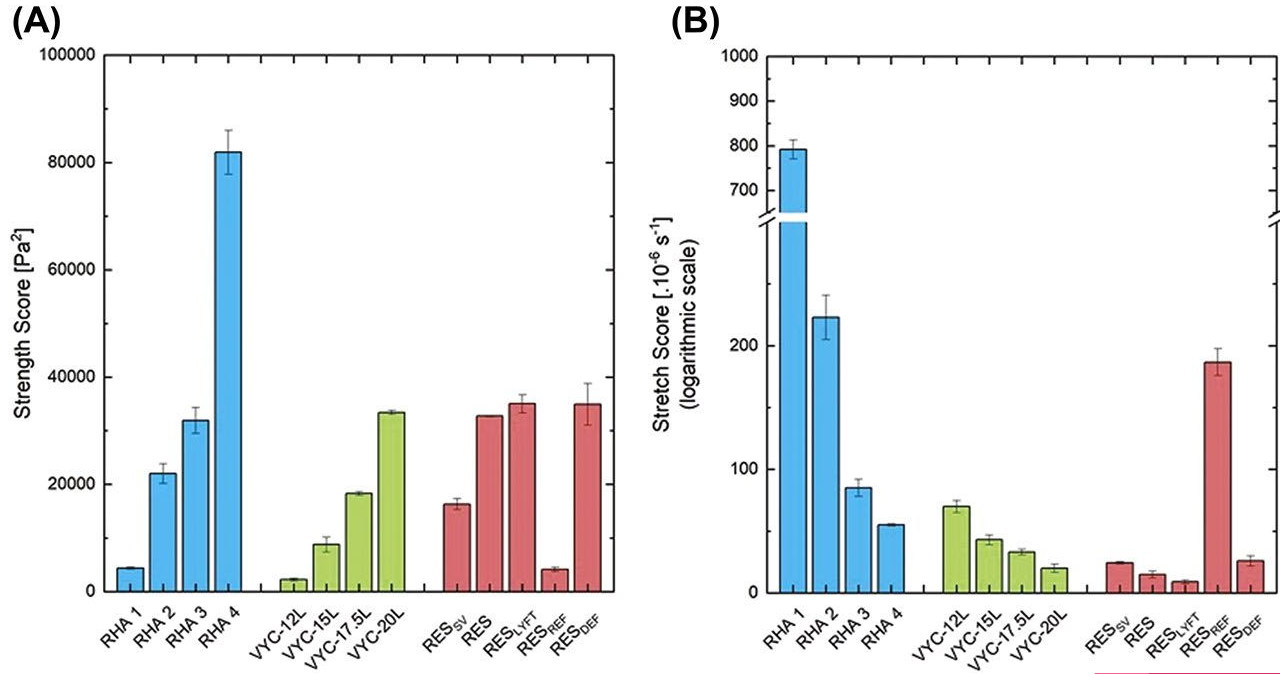


(Nate Lavey, NPR)

# Neuromodulators



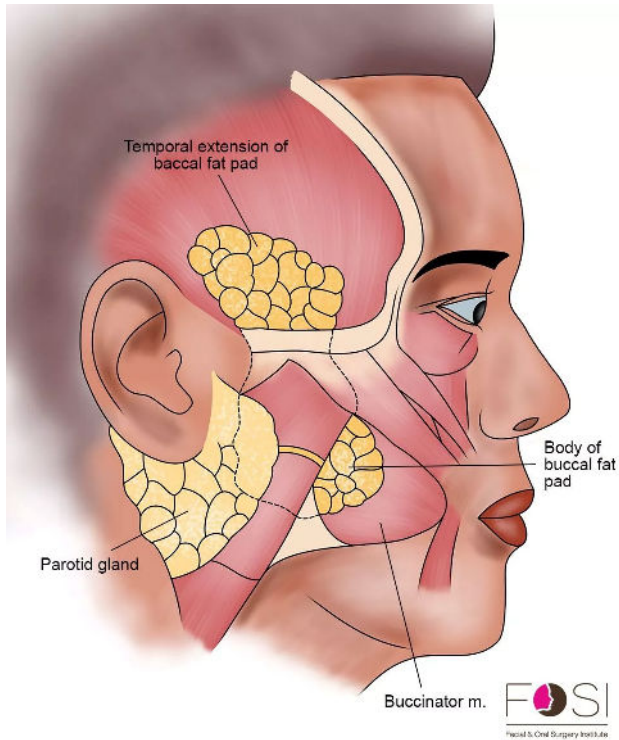
# Myomodulators - Filler Selection



(Dermatologic Surgery 47(5):e159-e167, May 2021.)

Scores of (A) Strength and (B) Stretch of Injectable Fillers

# Buccal Fat Removal



# Sofwave



## Before and After (40M)



Concern: Weak jawline and  
receding chin ("chneck")

Goal: Restore jawline contour,  
build chin to be in line with  
profile

Approach:  
4cc Voluma  
1cc Juvederm Ultra Plus  
2cc Lyft  
0.1cc Xeomin  
over the course of 2 visits



## Before and After (70F)



Concern: Jowls and loss of jawline definition

Goal: Reflate near the gonial angle

Approach:  
2cc Lyft  
1cc Contour  
over the course of 2 visits



# Before and After (46F)

Concern: Gauntness,  
particularly in the lower face

Goal: To restore her youthful  
jawline and highlight her  
cheekbones

Approach:  
Sculptra Temples  
1cc RHA3  
1cc RHA4



# Before and After (55F)

Concern: Jowls and deepening of nasolabial folds

Goal: Reflate and lift the lower face without adding bulk

Approach:  
2cc Restylane to chin  
Neuromodulator to gonial angle  
over the course of 2 visits



# Before and After (59F)

Concern: Weak jawline and  
receding chin

Goal: Re-define jawline

Approach:

1.5cc Radiesse

1cc RHA4

1cc RHA1

Over the course of 2 visits



# Before and After (62F)

Concern: Jowls and uneven jawline

Goal: Reduce Sagging

Approach:  
2cc RHA2  
3cc RHA3  
1cc Restylane



# Before and After (69F)

Concern: Jowls and uneven jawline

Goal: Re-define the jawline and reduce perioral lines

Approach:  
1cc Radiesse  
1cc Refyne  
1cc Voluma  
1cc JUP  
Sculptra Temples



# Before and After (72F)

Concern: Uneven lip protrusion  
and receding chin

Goal: Balance and rejuvenate

Approach:

2cc RHA3

1cc RHA1

1cc RHA2

Neuromodulator at regular  
intervals



# Before and After (39M)

Concern: Weak chin and jawline

Goal: Restore more masculine jawline and enhance chin

Approach:  
1cc RHA2 to chin and perioral region



# Combination Approach is Best!

