

# Leon H. Kircik M.D.

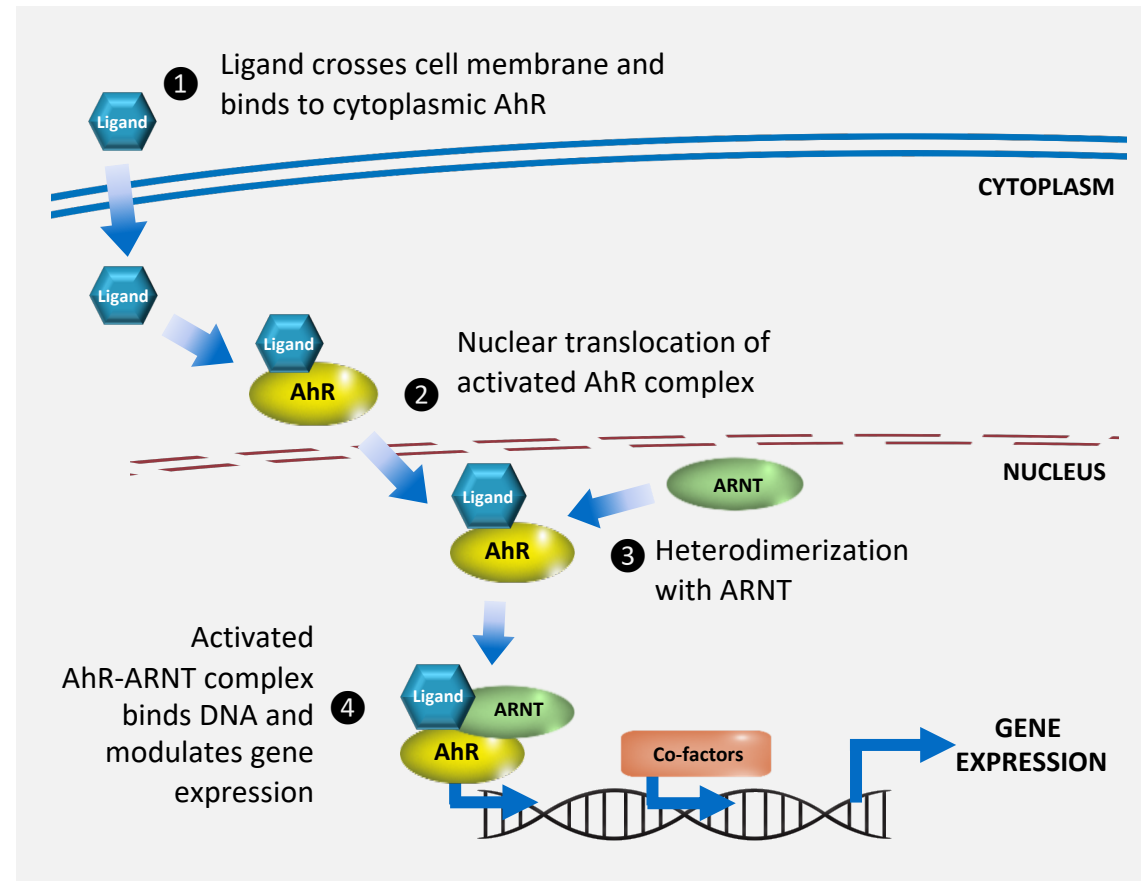
Clinical Professor of Dermatology  
Indiana University School of Medicine  
Mount Sinai Medical Center, New York, NY  
Physicians Skin Care, PLLC  
Louisville, KY



# Tapinarof: Therapeutic AhR Modulating Agent (TAMA)

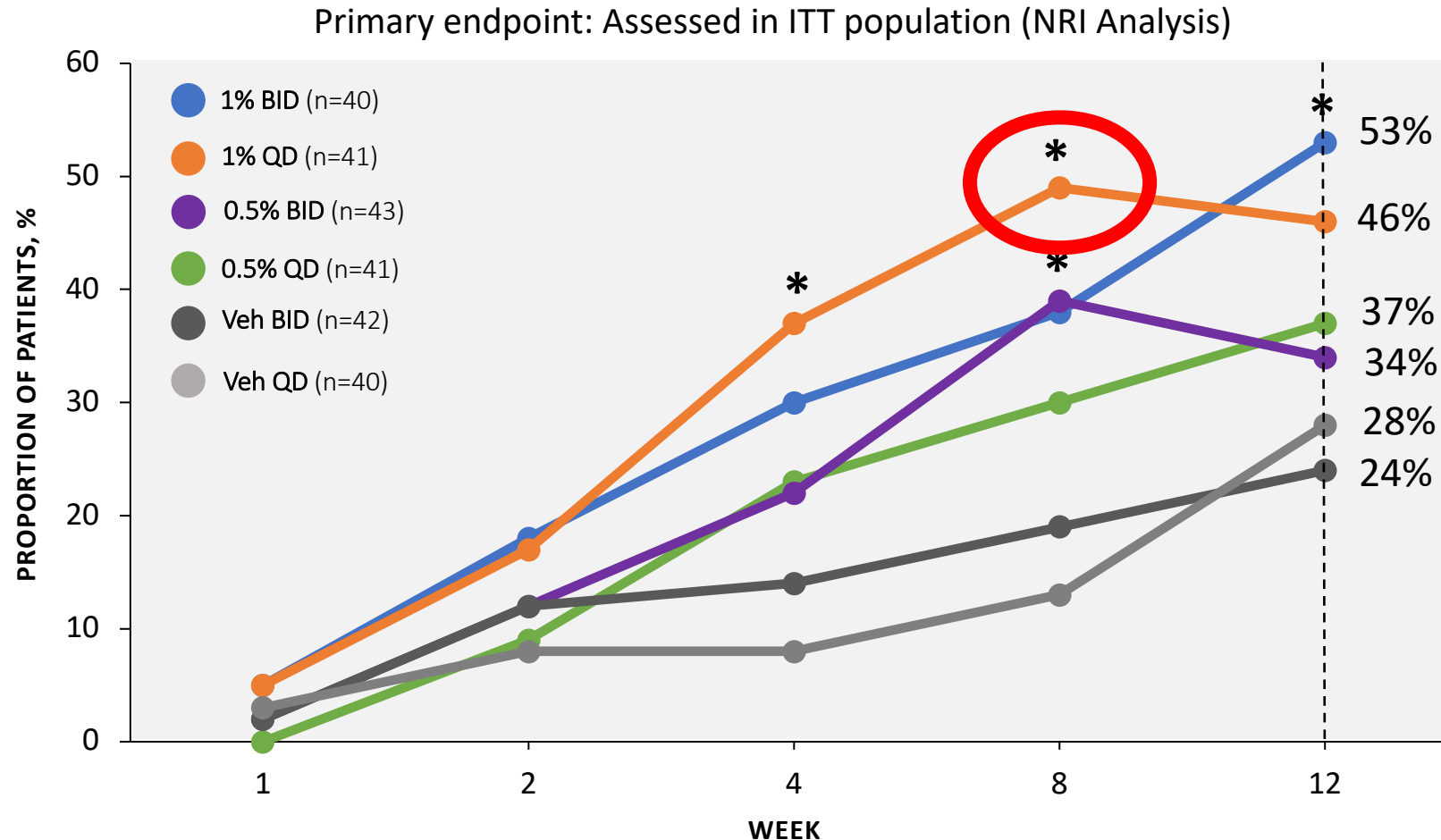
- Tapinarof is a topical, small molecule TAMA that directly binds to and activates AhR transcription factor<sup>1</sup>
- AhR activation via tapinarof *in vitro* and animal models leads to:
  - Reduction of Th17 cytokine expression<sup>1</sup>
  - Reduction of Th2 cytokine expression<sup>1,2</sup>
  - Decreased oxidative stress<sup>1</sup>
  - Increased skin barrier proteins<sup>1</sup>

## AhR pathway<sup>3</sup>



# Tapinarof Phase 2b Study in Atopic Dermatitis

## IGA 0 or 1 and $\geq 2$ -grade Improvement<sup>†</sup>



- Tapinarof resulted in higher IGA response<sup>†</sup> at all timepoints beyond Week 2 compared with vehicle

\*Difference vs vehicle is statistically significant at  $\alpha=0.05$  level (the 95% confidence interval excludes 0). <sup>†</sup>IGA response: IGA score of 0 (clear) or 1 (almost clear) and  $\geq 2$ -grade improvement from baseline.

BID, twice daily; IGA, Investigator Global Assessment; ITT, intention to treat; NRI, non-responder imputation; QD, once daily; Veh, vehicle.

Peppers J, et al. *J Am Acad Dermatol*. 2019;80:89-98.

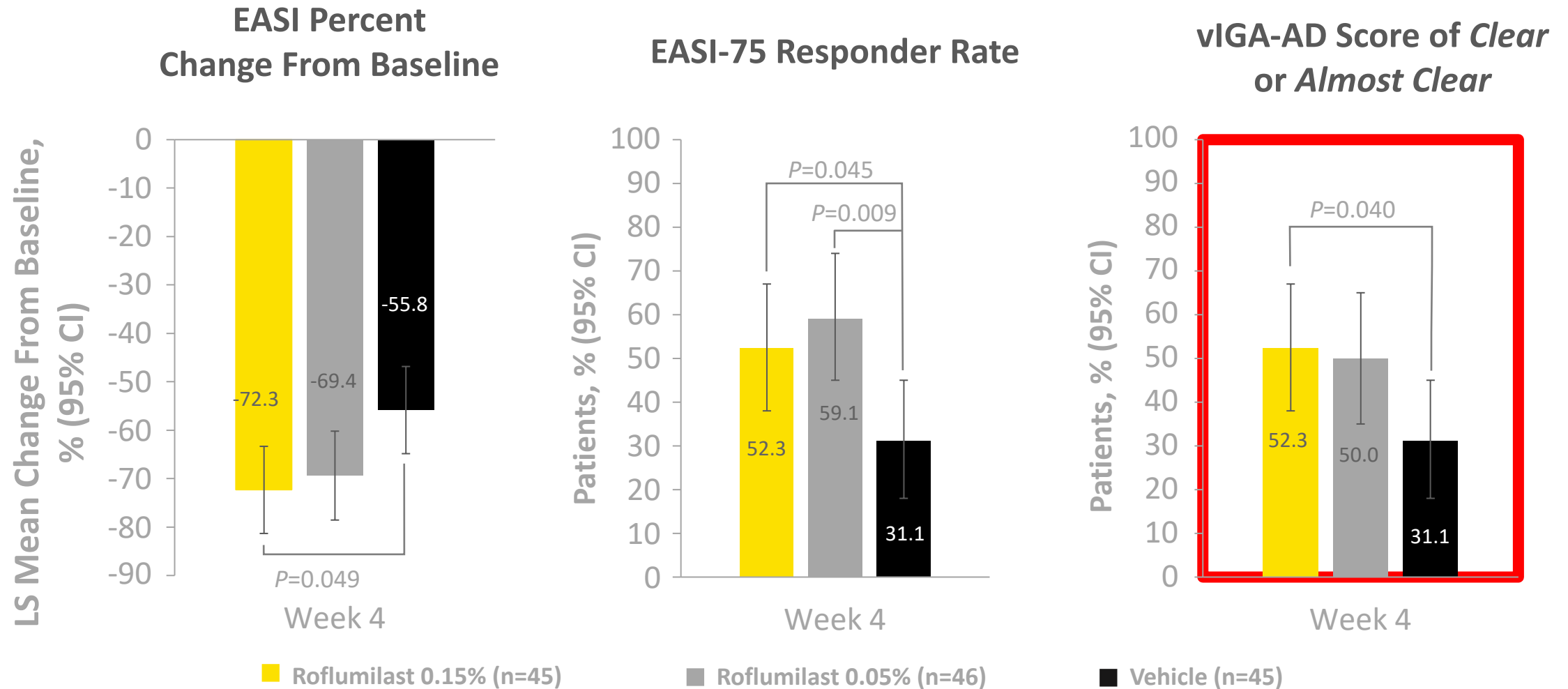
# The Safety and Efficacy of Roflumilast Cream 0.15% and 0.05% in Atopic Dermatitis: Phase 2 Proof-of-Concept Study

Melinda J. Gooderham,<sup>1</sup> Leon H. Kircik,<sup>2</sup> Matthew Zirwas,<sup>3</sup> Mark Lee,<sup>4</sup> Steven E. Kempers,<sup>5</sup> Zoe D. Draelos,<sup>6</sup> Laura Ferris,<sup>7</sup> Terry M. Jones, Etienne Saint-Cyr Proulx,<sup>9</sup> Robert Bissonnette,<sup>9</sup> Neal Bhatia,<sup>10</sup> Robert A. Koppel,<sup>11</sup> Scott T. Guenther,<sup>12</sup> Howard Welgus,<sup>13</sup> Charlotte Merritt,<sup>13</sup> Meg Elias,<sup>13</sup> Lynn Navale,<sup>13</sup> Robert C. Higham,<sup>13</sup> Michael Droege,<sup>13</sup> David R. Berk<sup>13</sup>

<sup>1</sup>SKiN Centre for Dermatology, Probit Medical Research and Queen's University, Peterborough, ON, Canada; <sup>2</sup>Icahn School of Medicine at Mount Sinai, NY; Indiana Medical Center, Indianapolis, IN; Physicians Skin Care, PLLC, Louisville, KY; and Skin Sciences, PLLC, Louisville, KY, USA; <sup>3</sup>Dermatologists of the Central States, Probit Medical Research, and Ohio University, Bexley, OH, USA; <sup>4</sup>Progressive Clinical Research, San Antonio, Texas, USA; <sup>5</sup>Minnesota Clinical Study Center, Fridley, MN, USA; <sup>6</sup>Dermatology Consulting Services, PLLC, High Point, NC, USA; <sup>7</sup>University of Pittsburgh, Department of Dermatology, Pittsburgh, PA, USA; <sup>8</sup>US Dermatology Partners, Bryan, TX, USA; <sup>9</sup>Innovaderm Research, Montreal, QC, Canada; <sup>10</sup>Therapeutics Clinical Research, San Diego, CA, USA; <sup>11</sup>The Dermatology Center of Indiana, PC; The Indiana Clinical Trials Center, PC, Plainfield, IN, USA; <sup>12</sup>Clinical Trials Management, LLC, Metairie, LA, USA; Tulane University School of Medicine in New Orleans, LA, USA; <sup>13</sup>Arcutis Biotherapeutics, Inc., Westlake Village, CA, USA



# Secondary and Exploratory Endpoints Showed Significant Improvement With Roflumilast Cream Over Vehicle



Data presented for intent-to-treat population. Only significant *P*-values (*P*<0.05) shown. CI: confidence interval; EASI: eczema area and severity index; LS: least squares; vIGA-AD: validated investigator global assessment—atopic dermatitis.

# Roflumilast Cream Improved Severity of AD

Roflumilast 0.15%

Roflumilast 0.05%

Vehicle

Baseline

vIGA-AD = 3



vIGA-AD = 2

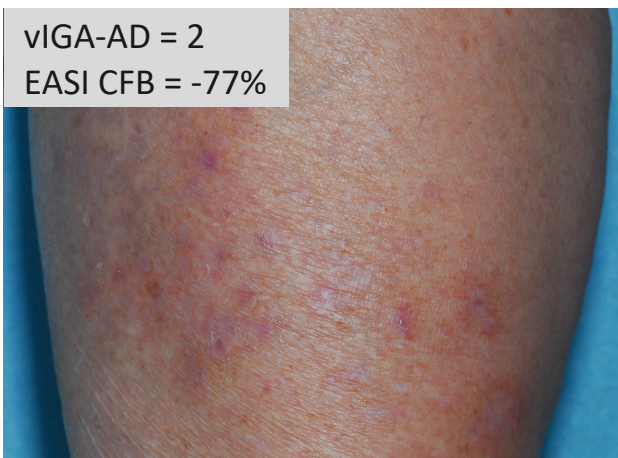


vIGA-AD = 3

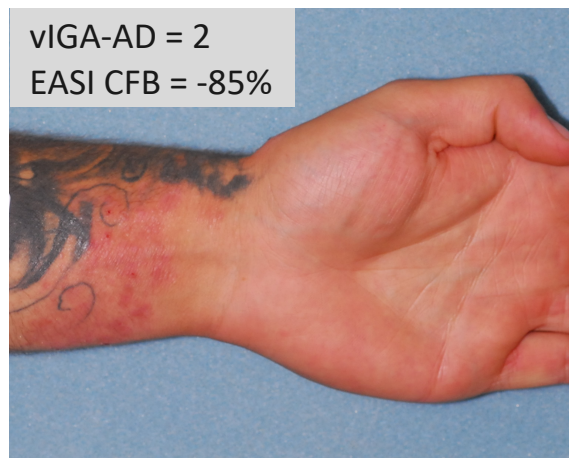


Week 4

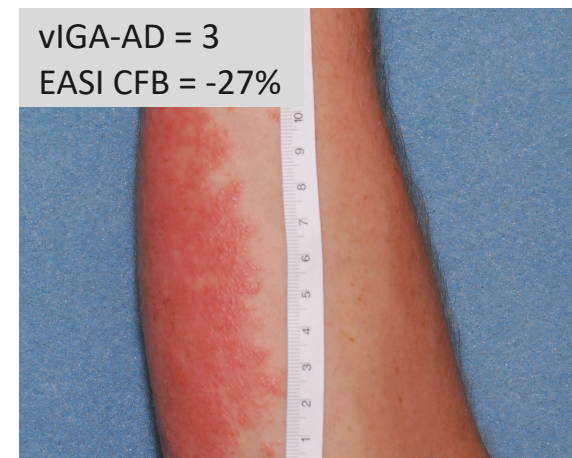
vIGA-AD = 2  
EASI CFB = -77%



vIGA-AD = 2  
EASI CFB = -85%



vIGA-AD = 3  
EASI CFB = -27%



CFB: change from baseline; EASI: eczema area and severity index; vIGA-AD: validated investigator global assessment—atopic dermatitis.